

KENDRIYA VIDYALAYA SANGATHAN, HYDERABAD REGION
SAMPLE PAPER 03 FOR PERIODIC TEST-II (2017-18)

SUBJECT: SCIENCE (086)

BLUE PRINT FOR PERIODIC TEST-II: CLASS IX

Chapter	VSA (1 mark)	SA – I (2 marks)	SA – II (3 marks)	LA (5 marks)	Practical Based Questions	Total
Matter in our Surroundings	--	--	--	5(1)	2(1)	7(2)
Is matter around us pure	--	--	6(2)	--	--	6(2)
The Fundamental Unit of life	--	--	--	5(1)	--	5(1)
Tissue	1(1)	--	3(1)	--	2(1)	6(3)
Improvement in food resources	--	2(1)	--	--	--	2(1)
Motion	--	--	3(1)	--	--	3(1)
Force and law of motion	1(1)	--	3(1)	--	--	4(2)
Gravitation	--	--	--	5(1)	2(1)	7(2)
Total	2(2)	2(1)	15(5)	15(3)	6(3)	40(14)

MARKING SCHEME FOR PERIODIC TEST-II

SECTION	MARKS	NO. OF QUESTIONS	TOTAL
VSA	1	2	02
SA – I	2	1	02
SA – II	3	5	15
LA	5	3	15
Pract Based Quest.	2	3	06
GRAND TOTAL			40

KENDRIYA VIDYALAYA SANGATHAN, HYDERABAD REGION
SAMPLE PAPER 03 FOR PERIODIC TEST-II (2017-18)

SUBJECT: SCIENCE

MAX. MARKS : 40

CLASS : IX

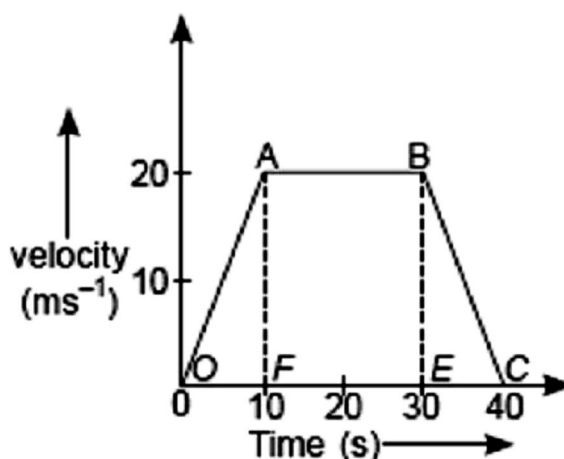
DURATION : 1½ HRS

General Instructions:

1. All questions are compulsory.
2. The question paper comprises of **two Sections, A and B**. You are to attempt both the sections.
3. All questions of **Section-A** and **Section-B** are to be attempted separately.
4. Question number **1 to 2** in **Section-A** are **one mark** question. These are to be answered in **one word** or in **one sentence**.
5. Question numbers **3** in **Section-A** is **two marks** questions. These are to be answered in about **30 words** each.
6. Question numbers **4 to 8** in **Section-A** are **three marks** questions. These are to be answered in about **50 words** each.
7. Question numbers **9 to 11** in **Section-A** are **five marks** questions. These are to be answered in about **70 words** each.
8. Question numbers **12 to 14** in **Section-B** are questions based on practical skills and are **two marks** questions.

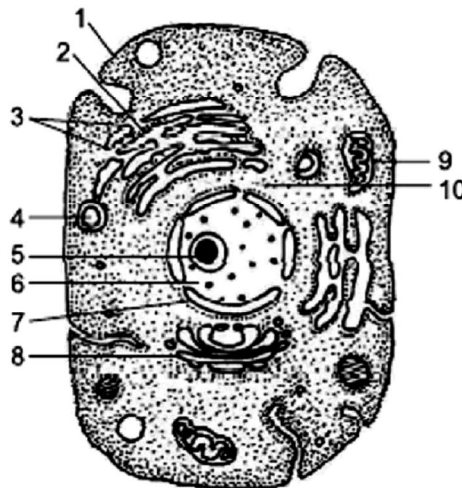
SECTION – A

1. Name the tissue present in soft parts of the plants like pith and cortex.
2. Apart from changing the magnitude of velocity of an object or changing the direction of motion of an object, what other changes can force bring on an object?
3. What are abiotic factors? Name two abiotic factors which affect the food materials during storage.
4. (a) Name the separation technique you would follow to separate
 - (i) Dyes from black ink
 - (ii) A mixture of salt and ammonium chloride
 - (iii) Cream from milk
 - (iv) Sodium chloride from its solution in water(b) State the principle used in separating a mixture of two immiscible liquids.
5. How many litres of 15% (mass/volume) sugar solution would it take to get 75 g of sugar.
6. The velocity-time graph of a body is shown below:



- (a) State the kind of motion represented by OA and AB.
- (b) Find the velocity of the body after 10 s and after 40 s.
- (c) What is the negative acceleration of the body?
- (d) Find the distance travelled between 10th and 30th second.

7. (a) Name the animal tissue which is present in the larynx?
 (b) Write the chemical constituents of this tissue?
 (c) What functions does this tissue perform?
8. Explain the following briefly:
 (a) A cricket ball causes much severe injury than a tennis ball on hitting a spectator.
 (b) An applied unbalanced force causes a change in momentum.
 (c) A greater force is required to impart greater velocity to an object.
9. Given below is a diagrammatic sketch of electron microscopic view of an animal cell : (a) Label the parts indicated by lines as 1 to 10. (b) Give two reasons to support that it is an animal cell (c) How many mitochondria are shown in the diagram?



A type of animal cell

10. (a) What is matter? Write two properties of solids and two properties of liquids.
 (b) Ramesh took two beakers A and B containing hot water and cold water respectively. In each beaker he dropped a crystal of copper sulphate. He kept the beakers undisturbed. After some time what did he observe? Why?
11. State universal law of gravitation. Explain its significance. Mass of an object is 20 kg. Find its weight on earth and on moon.

SECTION – B

12. Identify and explain the factor responsible for changed rate of evaporation in the following situations: (a) While putting clothes for drying, we spread them out. (b) Water coolers are not effective on a rainy day.
13. Identify the animal tissues from the given descriptions and also mention their location in the human body. Tissue 'A' - cells are filled with fat globules and the tissue acts as an insulator. Tissue 'B' – has cylindrical branched cells and the tissue shows rhythmic contraction and relaxation throughout life.
14. Lead has greater density than iron, and both are denser than water. Is the buoyant force on a lead object greater than, or lesser than or equal to the buoyant force on an iron object of the same volume? Explain your answer giving reason.